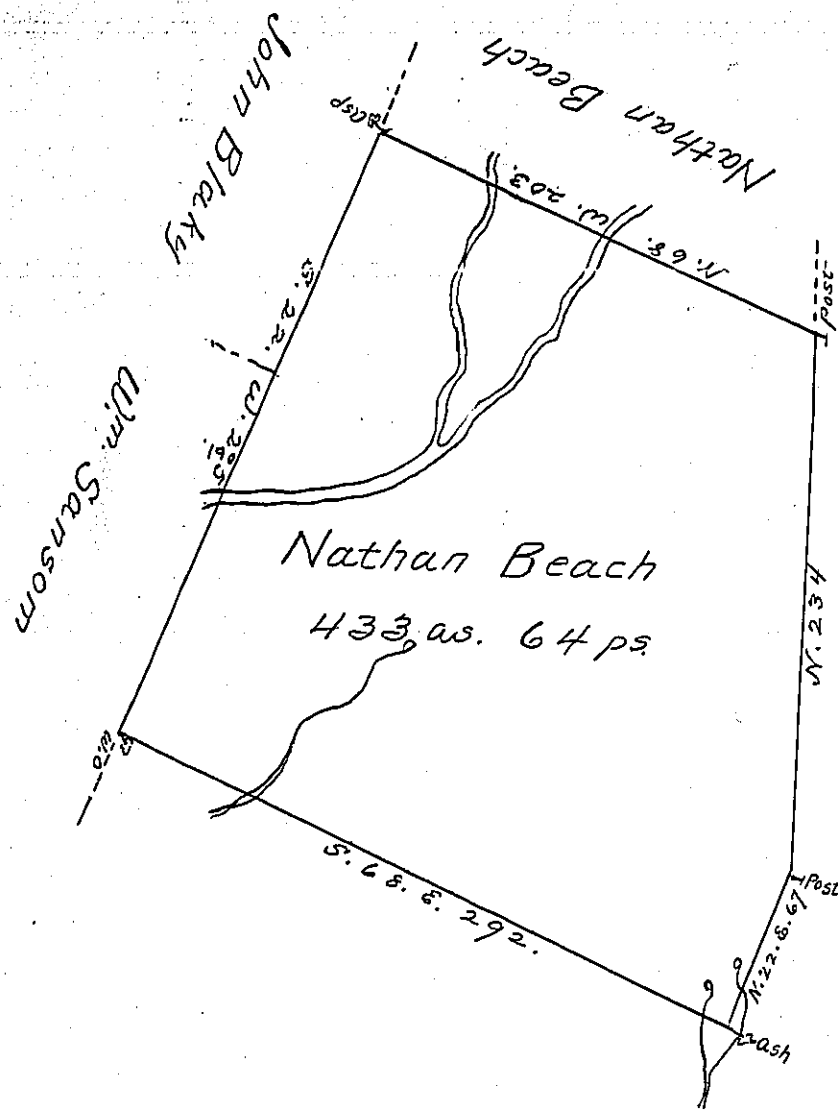


Ross Twp. X



By Virtue of a Warrant dated 2d. August 1793  
 Surveyed the 8th. of October 1793 unto Nathan Beach  
 the above described Tract of Four hundred and thirty  
 three acres & 64 perches of Land and usual allow<sup>s</sup>  
 Situated on the upper part of the East branches of  
 Fishing Creek in the Luzerne County

By  
 Wm. Montgomery Esq.

To Daniel Brodhead Esq. )  
 Survr. Genl. of Pennsylv. )

N. 3

IN TESTIMONY that the above is a copy of the original remaining on file in  
 the Department of Internal Affairs of Pennsylvania, made  
 conformably to an Act of Assembly approved the 16th day of  
 February, 1833, I have hereunto set my Hand and caused  
 the Seal of said Department to be affixed at Harrisburg,  
 this second day of December 1902

James W. Pitta  
 Secretary of Internal Affairs.